

INVITATION PAGE

Sealed bids addressed to

Fennville High School

Attn: Paul Andrews

4 Memorial Dr.

Fennville, MI 49408

Will be accepted until 3:00pm EST, on Wednesday, January 23rd 2019,

For uniforms in accordance with the attached specifications and conditions and invites your written bid.

Bids received after the time established above will be returned to the sender unopened. Envelope containing the bid should be clearly marked on the outside.

“SEALED BID-BAND UNIFORMS”

Bidder is to use the attached bid form in submitting bid, providing all information as requested. Unless otherwise noted, it is presumed that payment is to be made on the basis of net 30 days.

Bidder must furnish, prior to or at the time of the official bid opening established above, a complete **“BID SAMPLE”**. It is the bidder's responsibility to see that this uniform arrives prior to the bid opening. Since the bid sample is a requirement of your bid, the Purchaser reserves the right to return unopened any bid not accompanied by the required bid sample.

Lisa Bradley, Business Manager

Fennville High School

BID SAMPLE SHOULD BE ADDRESSED TO:

Fennville High School

Attn: Paul Andrews

4 Memorial Dr.

Fennville, MI 49408

GENERAL

The following specifications are provided to offer equal opportunity to all bidders, within the framework of standards of quality and design herewith established. Basic outside materials offered by the bidder shall be so designated or there equal. All equals or substitutes shall be so designated. Failure to do so will disqualify the bid. The Purchaser feels that standard styles, materials, linings and sundry items are equally available to all reputable manufacturers. Any bidder desiring to use any materials or construction practices as a substitute must also submit satisfactory proof in a separate letter attached to your bid that the proposed substitute is of equal or better quality than the construction and/or material(s), etc., specified. Bidder must itemize bids to show the unit price of each item bid, the appropriate extension, and the total amount of the bid. The unit price will govern should there be any errors in extensions. Any attachment sheet or form included with your bid that contradicts the intent, conditions or requirements of the specifications shall be a basis for rejection of your bid.

BID SAMPLE

All bids, in order to be considered, must be accompanied on or before the date and time of the bid opening with a complete finished sample uniform to include all basis garments parts including coats, trousers, overlays, shirts, sashes, etc., plus all components including headgear, plumes, and any other accessories, as applicable, for the band proper group only (unless other groups are specifically requested and noted on the bid form attached).

Samples are to be the quality, style, construction, workmanship and finish as that proposed to be furnished. Where specific construction features are required, these must be illustrated in the sample(s) provided or extra pieces of equipment must be furnished with your bid clearly displaying the manufacturers version of the feature specified.

It should be clearly understood that the bid sample(s) will be used for two purposes including: (1) to determine quality of workmanship and conformance to specifications, and (2) to determine the lowest qualified bidder meeting specifications. Therefore, the Purchaser reserves the right to open seams or linings to gain access to inner construction and also reserves the right to reject any bidder whose bid sample(s) submitted does not meet the specifications.

It should be further understood that, in order to be fair to all bidders, no bidder following the opening of bids will be permitted to submit additional bid samples or pieces of equipment or alter their bid sample(s) in any way. If one bidder is afforded such an advantage, then all other bidders must be given such an opportunity causing delays and confusion not desired by the Purchaser. Thus, all bids must be submitted complete with d sample(s) and a separate letter, if necessary, explaining deviations and/or proposed substitutions, so as to expedite an award. Any determination by the Purchaser as whether a bidder's bid sample(s) meets or does not meet the required specifications shall be final.

MATERIAL SWATCHES

Liberal size swatches of the material(s) you propose to furnish must be submitted with your bid with swatches properly labeled at to weight and fiber content as required by Federal law. State weight and indicate if fabric samples are mothproofed or treated with a water repellent or any other process. All fabrics specified are to be first quality. Seconds will not be acceptable. All bids must be accompanied with attached "FABRIC CERTIFICATION FORM" signed by an authorized official of the company bidding. Failure to execute and provide this form will be cause for rejection of your bid. In addition, the Purchaser reserves the right to further request a bidder to supply an affidavit signed by an official of the manufacturer of the material herein specified and quoted upon confirming that the bidder will, in fact, furnish the material(s) specified when manufacturing the order.

SILENCE OF SPECIFICATION

The apparent silence of this specification as to any details or the omission from it of a detail or description concerning any point shall be interpreted as meaning that only the best tailoring practices are to prevail and that all workmanship shall be first quality.

PRE-PRODUCTION/PILOT SAMPLE

The pre-production pilot sample and the specifications shall constitute the final basis for acceptance or rejection of bid. If approved, the pre-production/pilot sample will be returned to the successful bidder for duplication. Failure of the delivered uniforms to be of the specified fabric or of the quality of the approved sample shall completely release the Purchaser from any or all contractual obligations to the successful bidder, his agents or assignee. If for any reason the pre-production/pilot sample is not approved, the Purchaser may reject the bid and proceed to the next qualified bidder.

DELIVERY

Delivery of the uniforms shall be within the number of days indicated on the bid form following written acceptance of the pre-production/pilot sample uniform by the Purchaser, except as such delivery may be affected by an Act of God or similar activities beyond the control of the actual manufacturer.

LABELING

All basic uniform garment parts such as coats, trousers, overlays, shirt, skirts, etc., must show contents and percentage of contents of fabric used in that particular part of the uniform. This is required under law by the *Federal Labeling Act*. There must also be care instructions showing on each above-mentioned part. Each Uniform part is to be numbered, smallest to largest.

MASTER LIST

A register of student's names including uniform numbers and an accounting of height, weight, chest, waist, and headwear sizes, shall be supplied to the Purchaser along with the completed order for easy distribution of uniforms.

ADDITIONAL INFORMATION

The right is reserved to reject any or all quotation(s) or to accept or reject any items. The right is also reserved to award the bid to other than low bidder if it is found to be in best interest of the Purchaser. The reputation of the bidder will also be considered and therefore bidder may be required to supply a list of several orders manufactured in the past five years.

Upon official awarding of the order, the successful bidder will be required to provide a factory-trained area representative to visit the School to establish sizes and secure all final details pertinent to the manufacturing of the uniforms. Uniforms are to be shipped in hanging Wardrobe Cartons.

Coat Specifications

Pattern

Stock sizes run from 28 to 60 for coats (chest size) and 22 to 62 for trousers (waist size). Uniforms are to be provided in a full range of lengths including: short, regular, long, using hand tailored methods that insure proper fit of inner and outer construction details for each size run. All uniforms are to be made to fit the size and body style of the group being fitted. For ease of reissue, measurements are converted to the nearest stock size.

Material

All materials are to be Cold Water Shrunken to meet U.S. shrinkage specifications. Material is to be treated for moth proofing and water repellency. All fabrics are to be tested and examined for color fastness in connection with dry cleaning, moisture, perspiration, light wet pressing, dry and wet crocking.

Lining

The coat is to be fully lined with the finest quality High Satin Luster 100% Polyester Lining. This material has a thread count of 126 by 74 with denier 70 by 100, 2.5 oz. per square yard. Lining material is a determinate of the life and comfort of the coat. Lining patterns are cut to align with the outer shell. The bottom of the coat shell and lining is sewn with a single needle stitch to allow for easy alterations in the seam area. Seam allowance in the lining will correspond and align with the outside coat shell seams. The lining is securely fastened along all outer edges, neck and sleeve bottom with a lock stitch.

Optional: Athletic cut Self-Lined construction has matching material as detailed in design specifications covering entire coat front portion.

Inner Chest Canvas (See Diagram)

The inner coat foundation on fully constructed coats shall consist of a fine quality main canvas foundation. Each piece of the foundation is cut to the specific coat size required. This foundation will be manufactured from canvas that is comprised with a weft of 42% Viscose Rayon, 35% Hair, and 23% Polyester. It will run the length of the coat front and extend to the armholes and into the shoulder portion of the coat. Attached to the top of the inner coat foundation shall be a layer of non-shrinkable, non-woven felt padding composed of 100% Rayon, 2.5oz per square yard sewn firmly to the main canvas with a series of lock stitched rows. All layers are hand tailored and fitted for each coat size. On white colored outer shell coats, the same quality inner coat foundation in white will be used providing the appropriate aesthetics eliminating the gray canvas that will shadow through the coat. An optional third layer of duplicate canvas will extend laterally over the chest section to the armhole.

Collar Construction (See Diagram)

Mylar, a synthetic material that is crush-proof and dry cleanable, shall support standing collars. The outside of the Mylar is to be laminated with a cushioned pellon to provide a smooth outside appearance of the standing collar. The outside of the collar is to be of the fabric requested in the design specifications. The inside of the collar is Poly Pro-Twill with fused material to provide comfort and durability. Both the hook and the eye are to be riveted through the padding as well as the Mylar collar reinforcement.

Collar Liner (See Diagram)

There shall be a removable, washable collar liner made in two layers of 100% gabardine for comfort and absorbency. This liner is to have bias tape piped and sewn all around. The removable collar liner shall be fastened to the collar with a series of male snaps, evenly spaced at intervals of no more than 1 5/16" inches. Spacing the snaps at 1 5/16" intervals provides for better tailoring and fitting of the collar liner so it does not ride up and show on the outside providing for a neater more uniform appearance. These snaps are to be applied to tape, the tape then sewn to the collar and collar liner. Snaps are to be placed so the female portion of the snap shall be permanently sewn to the coat collar, while the matching male snaps shall be sewn to the removable collar liner.

Shoulder Pads (See Diagram)

Shoulder pads shall be constructed of the finest quality Desi-cotton. This cotton is multi-layered, to prevent packing or separation. The Pad will be covered with 3 oz. per yard Poly-needle punch. The pads are sewn into the coat shoulder and armhole seam.

Optional: Shoulder pad with full 100% acetate polyester covering used for Athletic line construction as detailed in design specifications.

Armhole (See Diagram)

The armhole will be constructed with the shoulder pad proportioned to fit the back and front of the shoulder. The lining of the coat and the hanging chest piece are then basted to insure proper proportion of the lining to the coat and to insure the shoulder pad fit to the armhole. The armhole is then sewn completely around fastening to the chest piece, shoulder pad and coat body at the same time.

Sweat Shield (See Diagram)

Shields are to be piped and machine stitched all around. The sweat shield must be made in fabric treated for water repellency. The purpose of the "sweat shield" is to protect or "shield" the under arm area from perspiration to help prevent discoloration of the external coat and deterioration of inner construction.

Sleeve Construction

Sleeves will have a 2.5" turn-up in both sleeve fabric and lining. The lining and sleeve fabric shall be joined and turned up as a combined layer and finished to permit easy sleeve length alteration by the removal and re-sewing of a single seam.

Optional: Athletic Line has adjust-a-cuff snap tape for ease of fit adjustments, sewn into side seam at sleeve end. 3 snap adjustment for Short, regular or long lengths.

Pockets

Upper and lower welt of the inside breast pocket is to be of the same material as the shell of the coat in black or white color and is bound around all edges. The inside upper will utilize pocketing material to provide for better durability. All coat pockets are made vertical style placed in the lining unless otherwise requested.

Seams (See Diagram)

The coat is to be tailored with four-piece back (center seam plus two additional back body seams), unless otherwise specified. Seams are to be plain with a maximum of 1/2" inches total width, lock stitched and pressed open. The coat is to be completely machine stitched except in areas where tailoring or appearance necessitates other methods. Thread breaks of all stitch types must be secured by stitching back form break 1/2- 1 inch (back-tacking).

Shoulder Straps

Shoulder straps, when specified, will be of the same material as the coat and will be cut for uniformity on the edges. Straps will be reinforced by fusible pellon on each ply—on both the top and the bottom-- to assure uniformity and shape retention.

Zipper

Zippers used are to be solid brass metal type, Talon YKK quality, or equal unless otherwise specified. For added durability, center concealed and butted zippers will be sewn on the outside of the inside facing.

Optional: Nylon zippers can be specified.

Thread

All sewing operations use "Spectrum" spun polyester size T40, two-cord thread. All threads used are to be heat resistant, vat dyed, sun fast, dry-cleanable and moisture proof.

Braid

Yarrington, Grip Flex, or ELC Industries (Rice) quality braid shall be used for trimming. Braid is to be colorfast to cleaning and preshrunk.

BIBBERS

Patterns

Patterns are to be marked and graded to insure accuracy and consistency. Patterns are to cover a full range of sizes including short, regular and long, from size 26 to 60. Patterns should provide for seam allowance for simple alterations from year to year by the end user.

Material

To be made in fabric as specified in design specifications.

Seams

Bibber out seams are to be sewn with a chain lockstitch, serge finished edges, and are to be pressed open. The seat seam and inseam of the bibbers are sewn with a lock stitch and pressed open, with all serge edges. The seat seam is double stitched for added durability.

Shoulder Strap Suspenders (See Diagram)

Shoulder Straps are to be 1 ½" wide nylon webbing in white or black. 1 ½" wide nickel cast steel non-rusting double slot sliders are used, two on each strap to allow for length adjustability. The suspenders will attach to a fabric loop in the front of the trousers using another double slot slide. The straps are permanently attached to the back of the bibbers with a lock stitch in a 1" x 1" square with a cross-stitch X, for added durability.

Zippers (See Diagram)

Fully constructed bibbers must use a heavy-duty metal zipper that is attached with separate, lined fly. Bibbers must, have a heavy duty metal snap at the top of the zipper. Zippers are to be graded for lengths based on the size of the bibbers.

Pockets

FOB wallet pocket will be manufactured using a hanging system method. Pocket will be topstitched in front chest area for easy access.

BIBBER OPTIONS-See Design Specifications Pages

Reinforced Crotch (See Diagram)

Bibbers shall have a set of four double crotch pieces, serge and stitched. Crotch linings must be placed on both sides of the reinforced seams. All stress areas must be bar-tacked. The fly seam will extend 1" past the inseam for extra reinforcement. The seat seams will be sewn on two-needle tandem machine using four dual duty cotton-poly threads. All turned back areas will be triple serge on both sides of the seam.

Optional Facing and Browne Outlet

Fully constructed bibbers have a full top facing, made of the same fabric as the outer garment. Facing is to be attached to the left and right halves of the garment separately, all around the top and down the center back, turned out and finished pressed. The center back is then joined with a 1 ½" lock stitched seam, forming a Browne Outlet to allow for easy alterations.

Gussets (See Diagram)

A gusset, approximately 3" x 7", made of high quality ribbed knit nylon, folded over to allow for a natural finished edge without stitching, then sewn into the side seam at waist area to allow for a freedom of movement in the arms and body.

Facing

Bibbers have a drop facing, made of the same fabric as the outer garment. Facing is to be attached to the front and back halves of the garment separately.

Facing Pockets

FOB pockets will be manufactured using a double welt Reese Style method. The welt will be interlined with pellon. The pocketing material is to extend up and be caught by the waistband topstitching. The internal pocket will be turned and top stitched.

**FENNVILLE HIGH SCHOOL
FENNVILLE, MICHIGAN**

COAT SPECIFICATIONS

STYLE: FULLY CONSTRUCTED COAT WITH OFF CENTERED SINGLE POINTED FRONT AND STRAIGHT BACK.

MATERIAL: BURLINGTON 036R ORANGE POLYESTER / BURLINGTON BLACK POLYESTER / 1933-6181 GREY / LIMESTONE GREY POLYESTER

CLOSURE: ZIPPER: BUTTED BRASS BACK ZIPPER

FRONT DESIGN: OFF CENTERED SINGLE POINTED FRONT WITH SPLIT FRONT. TOP IS BURLINGTON 036R ORANGE POLYESTER ENDS APPROXIMATELY 3" DOWN FROM FRONT OF COLLAR BELOW ORANGE IS BLACK POLYESTER, BOTTOM AND SIDES ARE ALSO BLACK POLYESTER. APPLIED ON BLACK A SPLIT SHIELD DESIGN STARTING 1" DOWN FROM TOP OF THE BLACK AND ENDS APPROXIMATELY 2" FROM BOTTOM OF COAT. SHIELD IS APPROXIMATELY 12" LONG AND 13" WIDE. SHIELD DESIGN RIGHT SIDE IS 4 - 2" STRIPES OF 1933-6181 GREY AT BOTTOM OF EACH STRIPE IS 1/4" SILVER METALLIC TUBULAR BRAID WITH 1/4" BLACK TUBULAR BRAID BUTTED TO SILVER. SHIELD DESIGN LEFT SIDE IS 4 - 2" STRIPES OF LIMESTONE GREY POLYESTER AT BOTTOM OF EACH STRIPE IS 1/4" SILVER METALLIC TUBULAR BRAID WITH 1/4" BLACK TUBULAR BRAID BUTTED TO SILVER. AT THE 4 GREY COLOR SPLITS THERE ARE 4 SILVER FINE GRAIN BUTTONS, RINGS/WASHERS. BELOW SHIELD IS A OFF CENTERED 3" TRIANGLE. RIGHT SIDE IS 6181 GREY. LEFT SIDE IS LIMESTONE GREY POLYESTER.

BACK DESIGN: BACK OF COAT IS BURLINGTON BLACK POLYESTER. NO TRIM.

SLEEVE DESIGN: BOTH SLEEVES ARE SPLIT IN COLOR. TOP OF SLEEVES ARE BURLINGTON 036R ORANGE POLYESTER, BOTTOM OF SLEEVES ARE BURLINGTON BLACK POLYESTER. EMBROIDERED ON RIGHT SLEEVE IN 5/8" BLACK PLAIN BLOCK ARCHED IS BLACKHAWKS. EMBROIDERED ON LEFT SLEEVE IN 5/8" BLACK PLAIN BLOCK ARCHED IS FENNVILLE

COLLAR: YES **STYLE:** WRAP AROUND STYLE RIGHT OVER LEFT **LINER:** BLACK
HOOK AND EYE: YES **MATERIAL:** BURLINGTON BLACK POLYESTER
BUTTON: YES BIGGER SILVER HALF DOME BUTTON

SHOULDER STRAPS: BURLINGTON BLACK POLYESTER NO TRIM.
STRAPS ARE TO BE SEWN DOWN PERMANENTLY.
BIGGER SILVER HALF DOME BUTTON

LINING: YES **MATERIAL:** BLACK LUSTER **FULL:** YES

FULL INNER CONSTRUCTION:
FULL LINING
SWEAT SHIELDS
SHOULDER PADS
SNAP IN COLLAR LINER
MULTI LAYERED INNER CHEST PIECE

**FENNVILLE HIGH SCHOOL
FENNVILLE, MICHIGAN**

BIBBER SPECIFICATIONS

STYLE: JUMPSUIT BIBBERS

MATERIAL: BURLINGTON BLACK POLYESTER **HEM:** SNAP TAPE HEM

MISC: NYLON WEB SUSPENDERS, BACK STRAPS WITH CRISSCROSS STICH
BRASS ZIPPER WITH FLY AND SNAP CONSTRUCTION.
4" X 6" INSIDE HANGING POCKET
4 WAY REINFORCED CROTCH
REINFORCE THE BOTTOM OF ZIPPER WITH BAR TACKS

GAUNTLETS SPECIFICATIONS

8" ROUNDED STYLE GAUNTLETS
BOTH GAUNTLETS ARE BURLINGTON BLACK POLYESTER. ON TOP EDGE OF
GAUNTLETS 1" STRIPE OF SILVER GLITTER METALLIC. ON BOTTOM OF SILVER
STRIPE ¼" SILVER METALLIC TUBULAR BRAID. ON SILVER GLITTER METALLIC
STRIPE ONE BIGGER SILVER HALF DOME BUTTON RINGS WND WASHER STYLE.

HEADWEAR

STYLE: FLAT TOP SHAKO **PLUME SOCKET:** YES

SIDES, TOP, TOP BAND, BOTTOM BAND: BLACK VINYL **TRIM:** NONE

FRONT CHAIN: SILVER 2001 FRONT STRAP

SIDE BUTTONS: SILVER DOME

VISOR: BLACK VISOR WITH SILVER TRIM

CHINSTRAP: BLACK WITH SILVER BUCKLE

ORNAMENT: ON FRONT OF SHAKO 3 - 8" LONG BRAID STRIPES OF ¼" SILVER
METALLIC TUBULAR BRAID EQUALLY SPACED WITH SILVER DOME BUTTONS AT
THE END OF EACH STRIPE

FULL SWEATBAND HEAD LINER WITH GROMMETS: YES

PLUME

10" BLACK FRENCH FOUNTAIN WITH SILVER MYLAR

**FENNVILLE HIGH SCHOOL
FENNVILLE, MICHIGAN**

ACCESSORIES

PLASTIC SHAKO BOXES

NYLON GARMENT BAG WITH SHOE POUCH, ID WINDOW, AND PRINT

NYLON PLUME CARRY CASE FOR 63 PIECES

3' X 8' PRINTED BANNER

THIS DOCUMENT MUST BE COMPLETED AND SIGNED BY AN AUTHORIZED OFFICIAL OF THE COMPANY SUBMITTING THE BID IN ORDER FOR IT TO BE CONSIDERED.

FENVILLE HIGH SCHOOL BID FORM

We have examined your specifications, fully understood and accepted all their terms and conditions including the bid sample requirement and submit the following prices and information: (In case of errors, unit price will govern)

<u>QUANTITY</u>	<u>ITEM</u>	<u>UNIT PRICE</u>	<u>EXTENSION</u>
100	MARCHING COATS		
100	MARCHING BIBBERS		
100	PAIR GAUNTLETS		
100	SHAKOS		
100	PLASTIC SHAKO BOXES		
100	PLUMES		
100	GARMENT BAGS		
2	PLUME CASES		
1	BANNER		
100	HANGERS		
24	FINE GRAIN BUTTONS		
1		SHIPPING	
		TOTAL	

TERMS:

If required, delivery of a complete "Pre-Production/Pilot Sample" would be assured within _____ days. Delivery of the complete order will be made within _____ days after receipt of "Pre-Production/Pilot Sample" approval, complete sizes and signed order.

SALES REPRESENTATIVE:

Name _____

Address _____

City/ State _____

Phone _____ - _____ - _____

Date ____ / ____ / ____

FIRM NAME _____

Signed _____

Address _____

City/ State _____

Phone _____ - _____ - _____

Date ____ / ____ / ____

THIS DOCUMENT MUST BE COMPLETED AND SIGNED BY AN AUTHORIZED OFFICIAL OF THE COMPANY SUBMITTING THE BID IN ORDER FOR IT TO BE CONSIDERED

FABRIC CERTIFICATION

I, _____, as an authorized official and employee of the company bidding, hereby certify that all materials and fabrics quoted upon and which would be used in the manufacturing of the proposed uniforms herein described will be the exact materials as called for in the specification. The materials and fabrics, further, will be of first quality. I hereby also confirm that no seconds and no flawed materials or fabrics with imperfections of any kind will be used should our Company be awarded the bid.

DEVIATION CERTIFICATION

The "Bid Sample" included with your bid is to be of the quality, style, construction, workmanship and finish as that proposed to be furnished, as explained on page 1 of the specifications. Deviations from the required specifications must be fully documented and explained in detail below. Otherwise, it is presumed the uniforms quoted upon and proposed by your company would be constructed as your complete "Bid Sample" submitted.

I hereby confirm that the attached specifications will be fully met with the following exceptions, if any:

Authorized Signature _____

Print Name / Title _____

Company Name _____

Date _____

Affidavit of Bidder

The undersigned, the owner or authorized officer of _____ (the "Bidder"), pursuant to the familial disclosure requirement provided in the Fennville Public Schools advertisement for Band Uniforms bids, hereby represent and warrant, except as provided below, that no familial relationships exist between the owner(s) or any employee of _____ and any member of the Board of Education of the School District or the Superintendent of the School District.

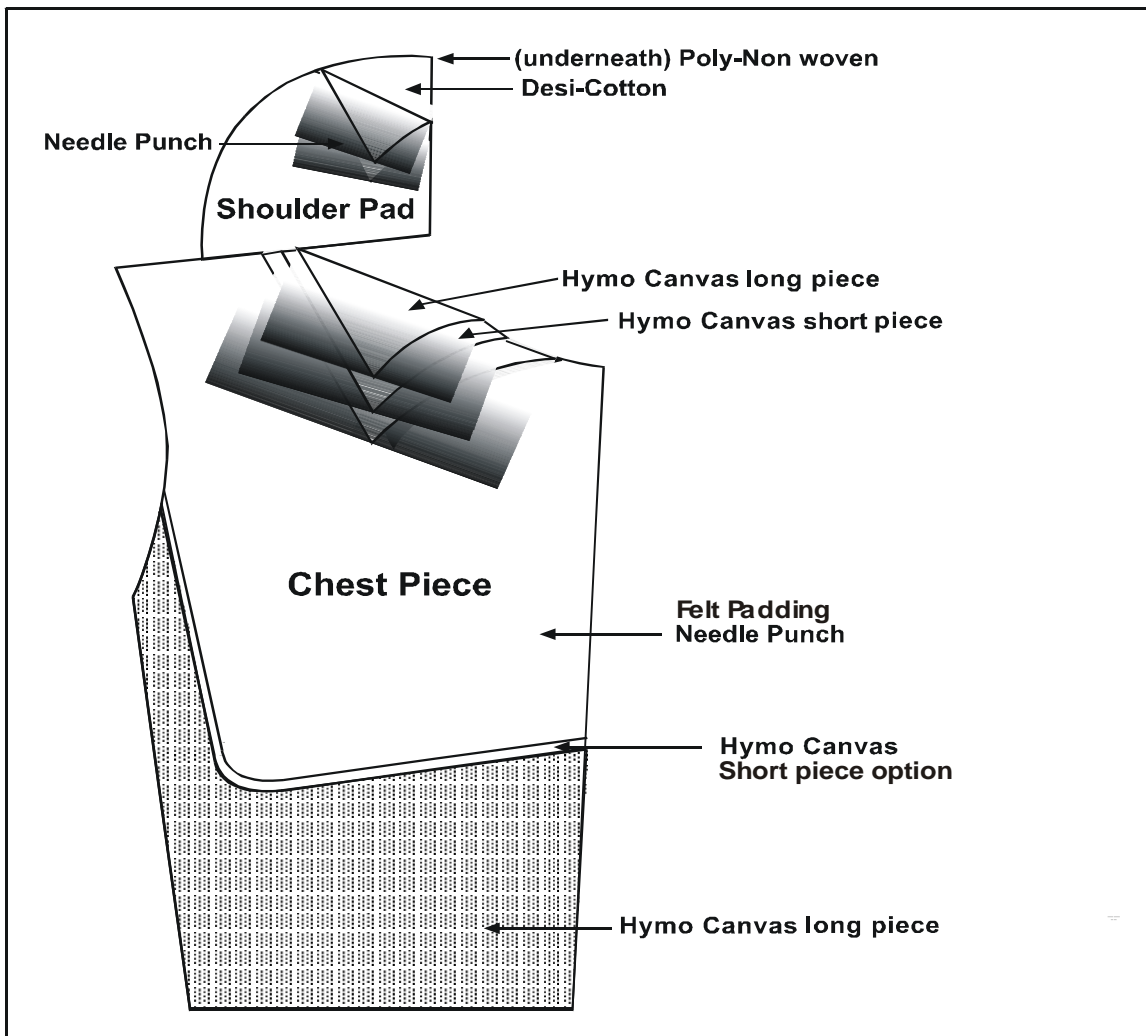
List any Familial Relationships:

Bidder:

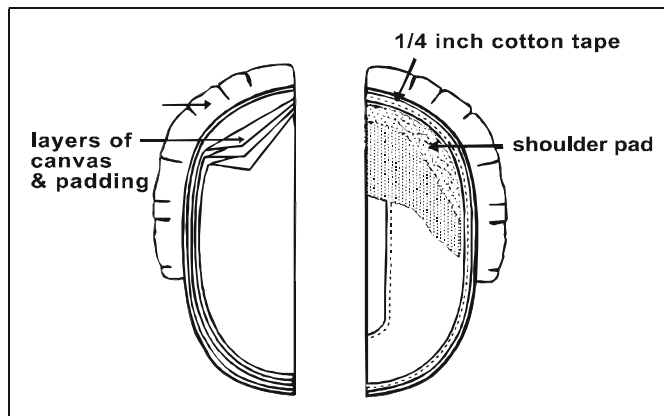
By: _____

Its: _____

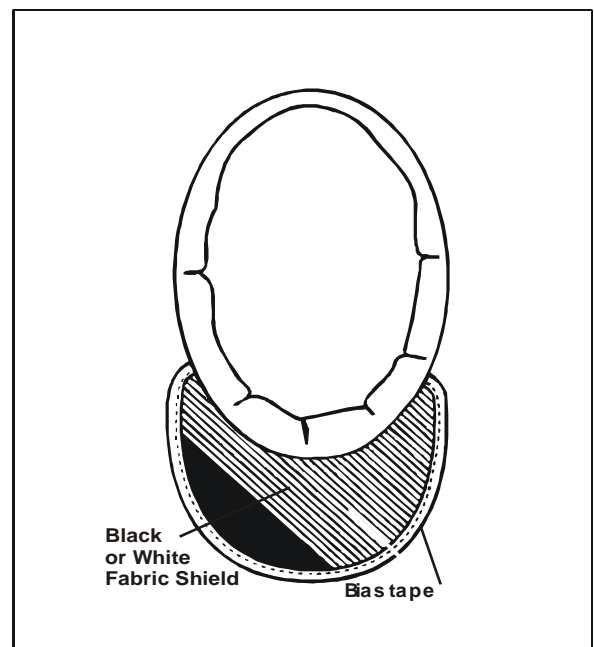
INNER COAT



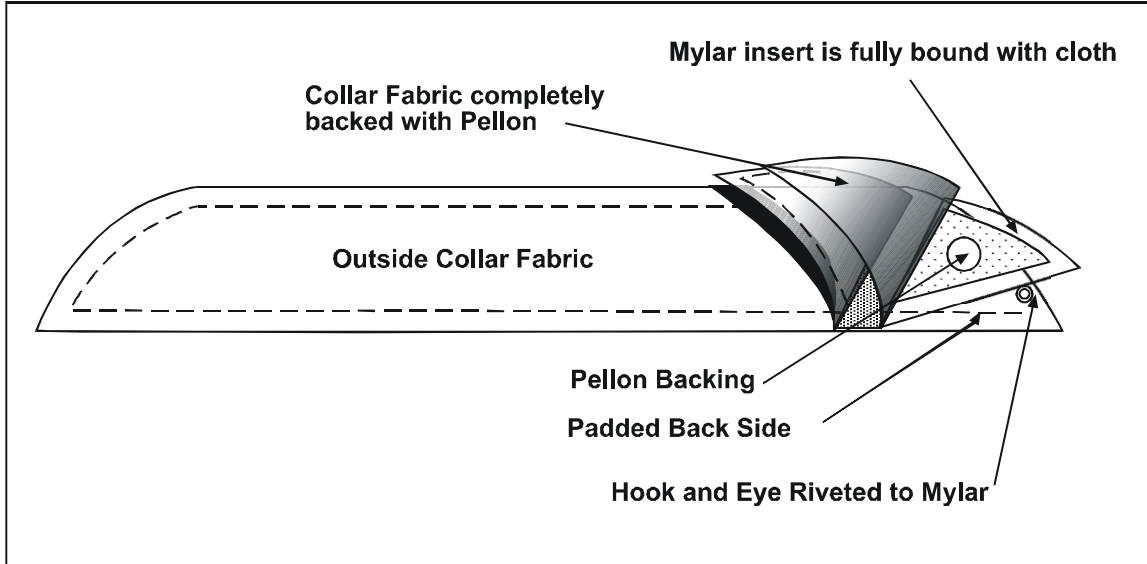
ARM HOLES



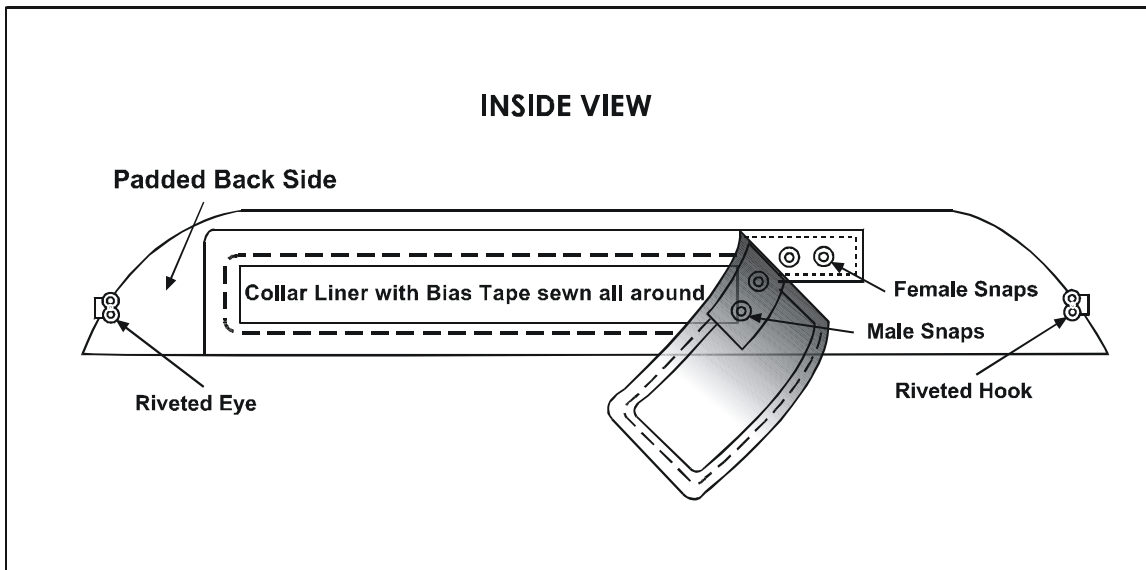
SWEAT SHEILD



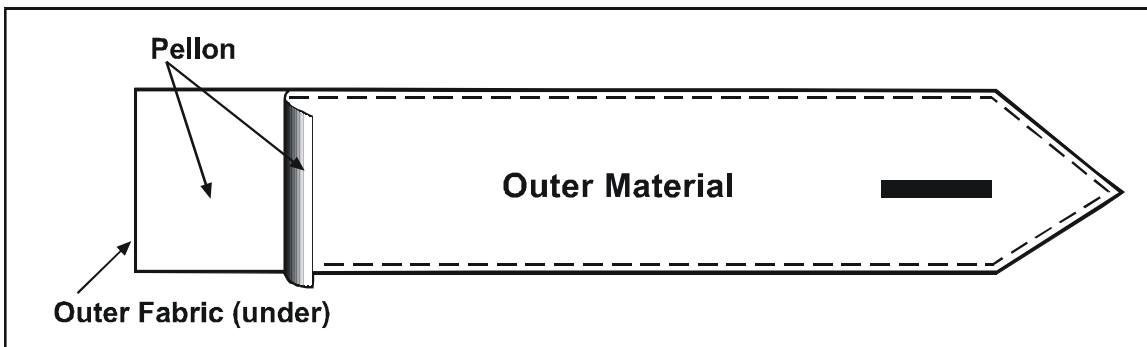
VIEW OF COLLAR OUTSIDE VIEW



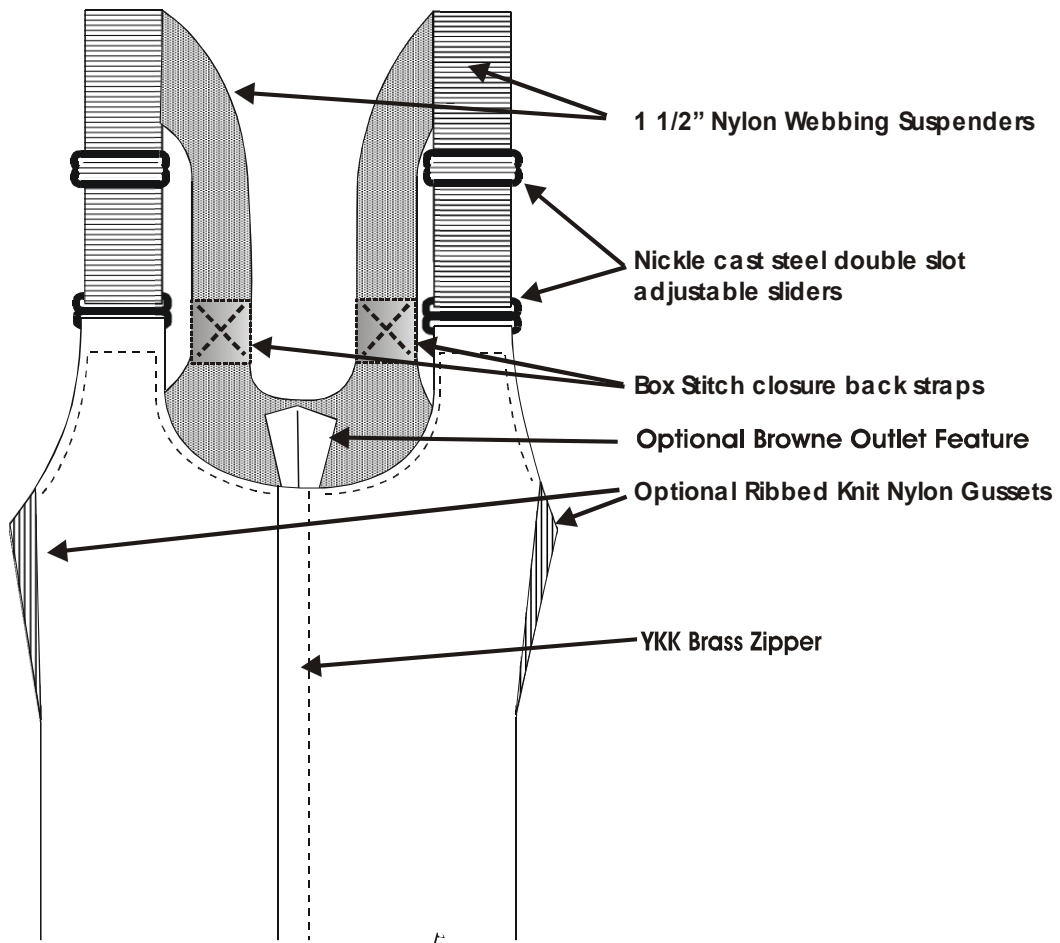
INSIDE VIEW



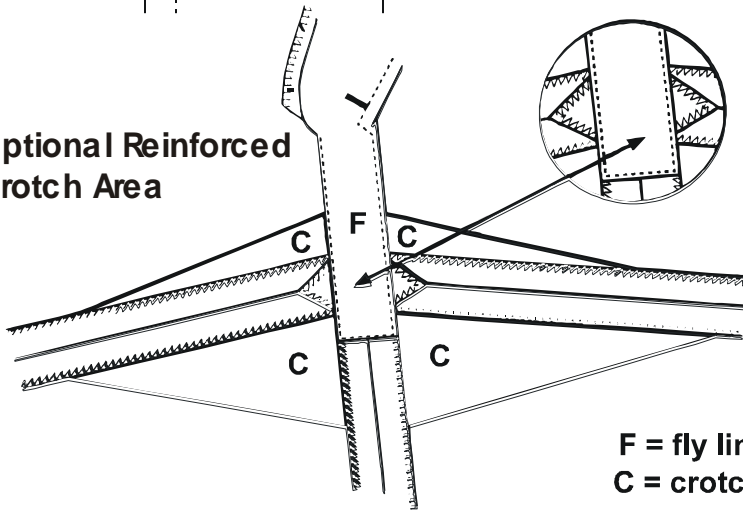
STRAP



BIBBER DETAILS

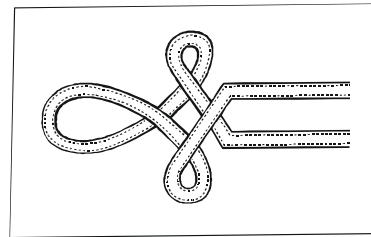
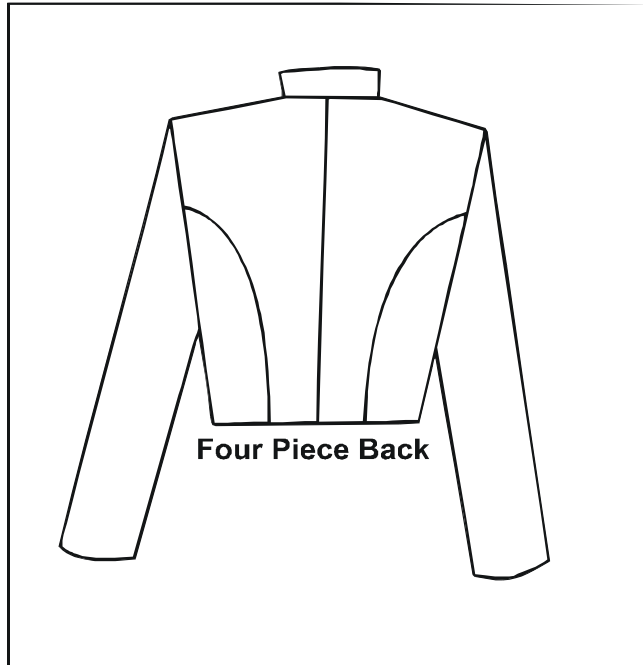
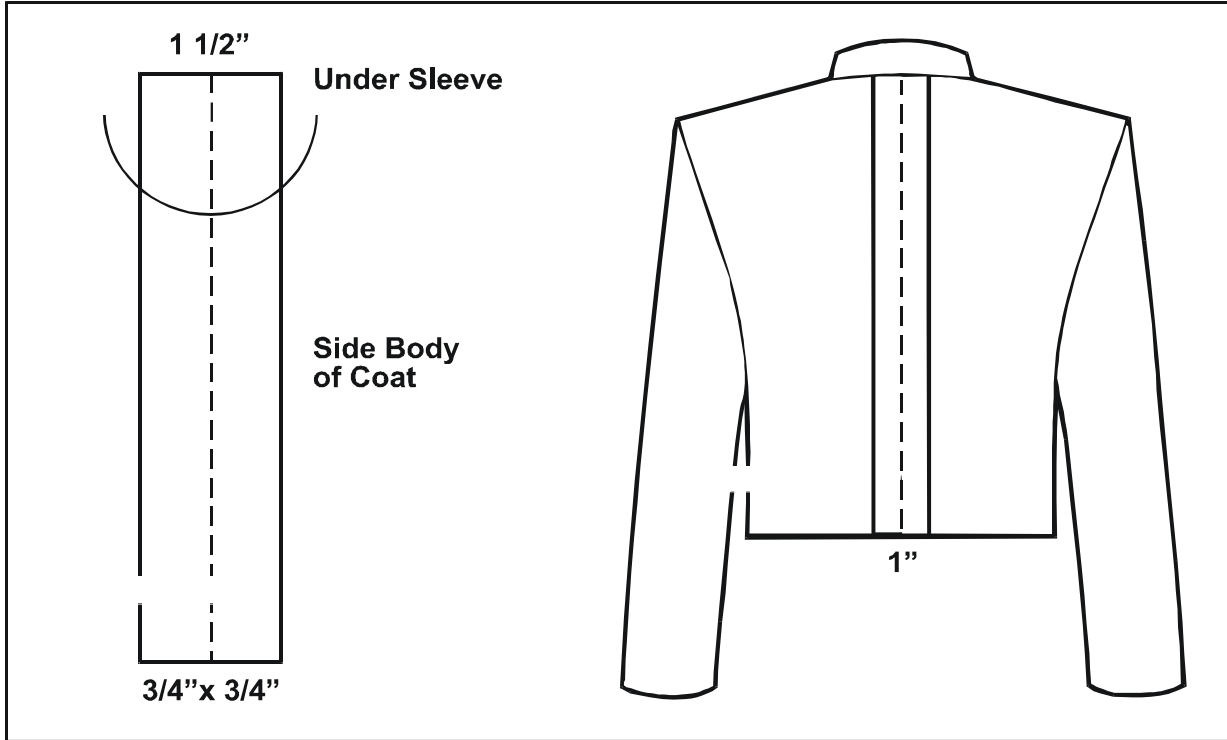


Optional Reinforced Crotch Area

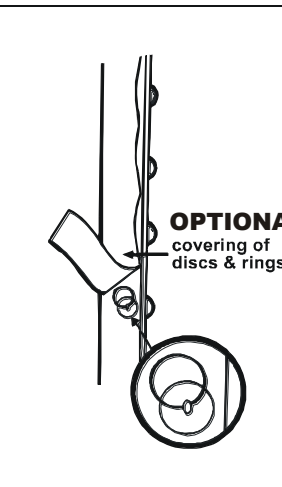


SPECIAL FEATURES

COAT SEAMS



BUTTON FASTENERS



Padded Mylar Wings as used in Collar Construction

